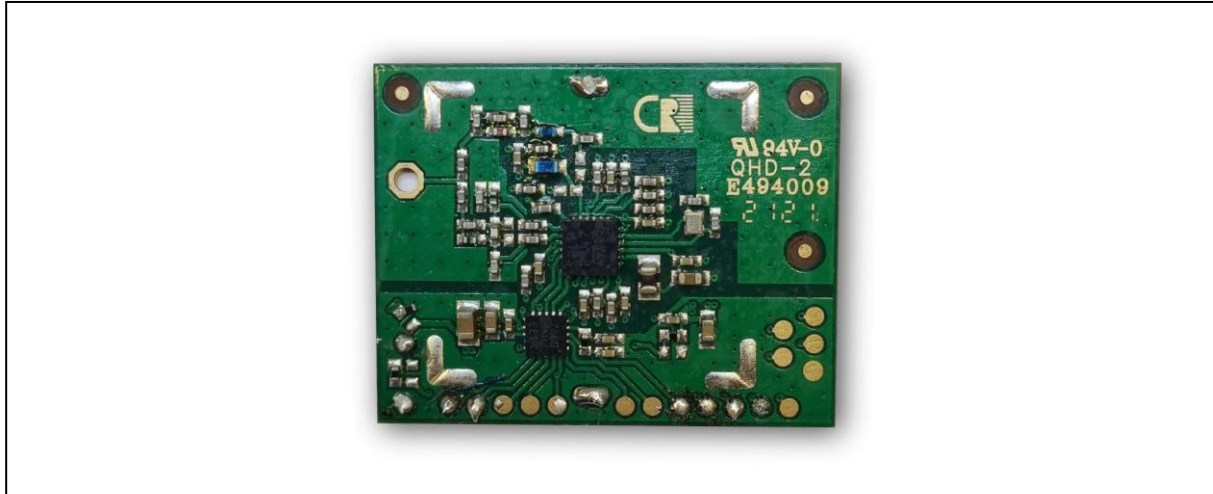


BSC EnOcean 3.0 Reference Design



Features

The BSC EnOcean 3.0 reference design is the heart of maintenance-free, secure IoT sensors. It enables cost-effective direct integration of an EnOcean 3.0 wireless interface with microprocessor into customer-specific wireless sensors. The reference design is designed for lowest power consumption in stand-by mode to realize maintenance-free end products. Due to the compact design, ultra-flat sensor designs can be realized. The EnOcean 3.0 certified reference design guarantees compatibility to EnOcean based IoT solutions with shortest product development times.

BSC Computer realizes your IoT product idea in a customer-specific development project:

- Product specification and system architecture
- Electronics development with RF, analog and digital design
- Mechatronic integration
- Product qualification and certification according to EnOcean specification
- Prototyping and production

Technical Specifications

Radio Interface: EnOcean 3.0 certified, 868 MHz
 Supported Profiles:TX EnOcean EEP v3.1, EnOcean Security v2.6
 Antenna: whip antenna, 50Ohm external
 CPU: 32-bit MCU Arm®-based Cortex®-M0+
 Peripheral Interfaces:analog and digital Interfaces for individual Sensors
 Power Supply:3VDC
 Dimensions Reference Design LxWxH:34 x 26 x 2mm (w/o battery holder)
 Temperature Range, Humidity:-20 – 60°C, 85%rH not condensing

